

Flow Cytometry with Ardena: Bespoke, Backbone and Built

Ardena is a science-led, integrated development partner supporting biotech and pharmaceutical companies across the drug development lifecycle. Ardena provides flexible support across preclinical and clinical studies, both regulated and non-regulated solutions for PK, immunogenicity, and translational biomarkers, generating high-quality data that drives confident decision-making.

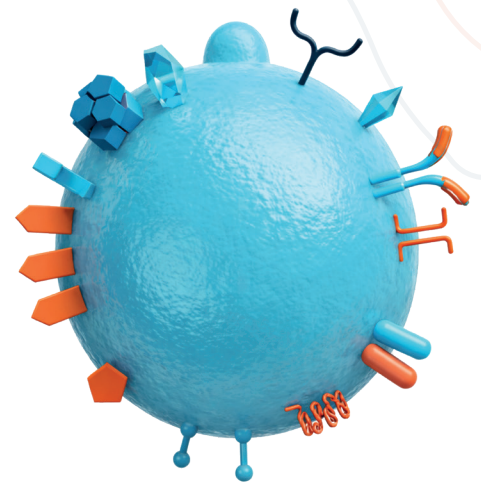
Our experienced team take a targeted and robust approach to establishing bespoke flow cytometry assays. These include standard immunophenotyping, with off-the-shelf panels for TBNK and Treg assessment; receptor occupancy, intracellular cytokine staining and functional assays.

What sets us apart is our ability to offer the scientific rigour, quality, and reliability expected by pharma, while maintaining the agility, responsiveness, and collaborative mindset valued by biotech. As a specialist boutique partner with transatlantic reach, Ardena helps clients reduce complexity and accelerate development.

Bespoke

Need something novel or tailored to you?

- Build your own panel alongside our team with over 15 years experience with *de novo* development
- Up to 12-parameter panels validated according to CLSI Ch H62 guidelines and latest whitepapers
- Tackling flow cytometry's biggest challenge —sample stability— with expert, tailored, cost-efficient solutions
- Flexible capacity to accommodate year-round sample analysis (including after hours)



ARDENA

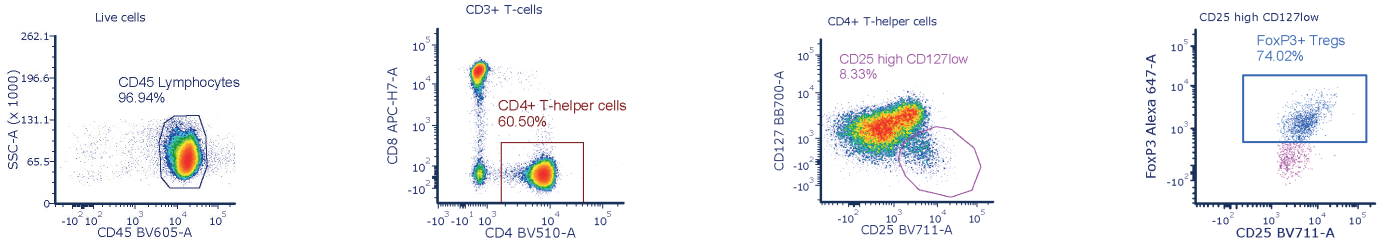
info@ardena.com

www.ardena.com

Backbone

Need the ideal starting point?

- Already developed backbone panels with established phenotypic markers
- Add up to two additional custom markers of your own in open channels
- Established in whole blood and frozen PBMC's



Built

Already know exactly what you need?

- Take advantage of our already validated TBNK panel ready to go for your clinical program
- For use with fresh and frozen whole blood samples

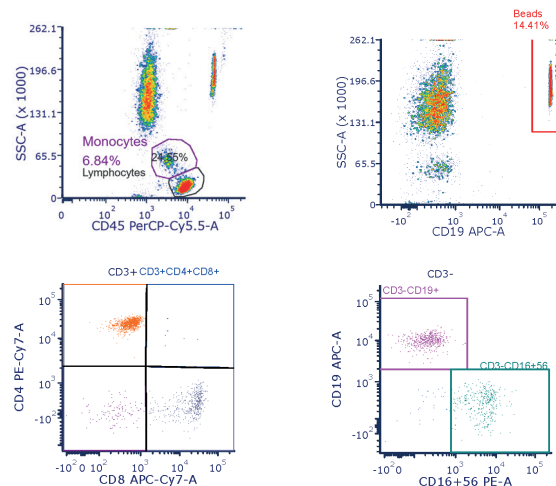
Cells	Population of interest
Total T-cells	CD45+CD3+
T-helper/inducer cells	CD45+CD3+CD4+CD8-
Cytotoxic/suppressor T-cells	CD45+CD3+CD4-CD8+
B-cells	CD45+CD3-CD19+
NK-cells	CD45+CD3-CD16+CD56+
Monocytes	CD45+SSC intermediateCD3-

Case study: In-house Treg backbone panel

- Panel markers:
 - CD45/CD3/CD4/CD8/CD25/CD127/FoxP3 /Viability
- Qualified reproducibility:
 - Between run CV: <20%
 - Within run CV: <20%

Case study: Fully validated TBNK panel

- Readout: absolute counts and % cells
- Validated reproducibility:
 - Between run CV: <15%
 - Within run CV: <15%
- Validated stability:
 - Whole blood – 56 days at ULT or RT
 - Post stain stability – 24 hours



Discuss your flow cytometry requirements with our experts



info@ardena.com

www.ardena.com